

## 1. Sign In

Sign in by using your network login. Once you log in, connect your google account in the 'Sign in options' options. Now you can log in using the 'Sign in with Google' button.



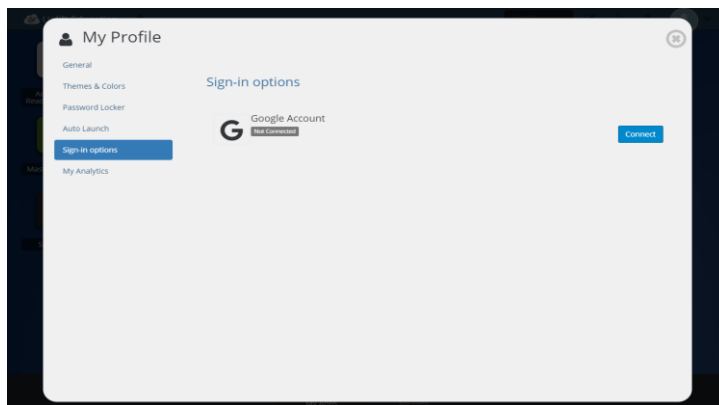
## 2. My Profile

Here is where you change your profile picture, themes & colors, access your password locker and sign-in options.



## 3. Sign-in Options

**Profile Settings > Sign-in options** allows you to connect your google account with ClassLink in order to use the 'Sign in with Google' button on your login page.



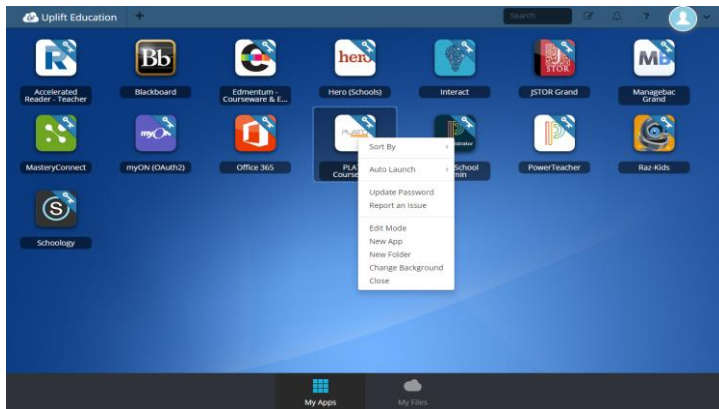
## 4. My Apps

The My Apps screen is where all of your online resources will be located. Enter your username and password once (if prompted) and ClassLink will remember it for you!



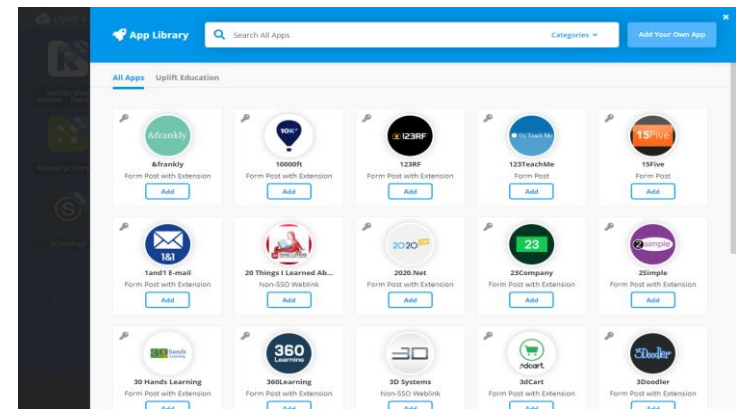
## 5. Update Password

Right click an app and choose 'Update Password' to update or change your stored username and passwords for your applications. Use this if you have entered your username or password incorrectly or if something has changed/updated.



## 6. App Library

The library contains many educational resources to choose from. Click the Plus (+) on the top left of the My Apps screen. Click Add on any app to place it on your My Apps screen.



## 7. Edit Mode

To go into Edit Mode, click the paper and pencil symbol on the top right of your screen. While in Edit Mode, you can create folders and customize your My Apps screen.



## 8. Cloud Drives

**My Files > Manage Services > Connect** allows you to connect your Google Drive in ClassLink to access all of your files in one location!

